

# RAC QUESTOR®



## Advanced Analytical Toolset

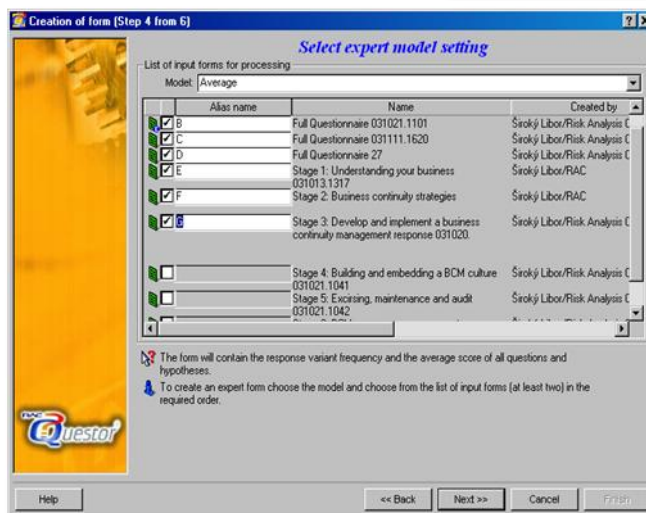
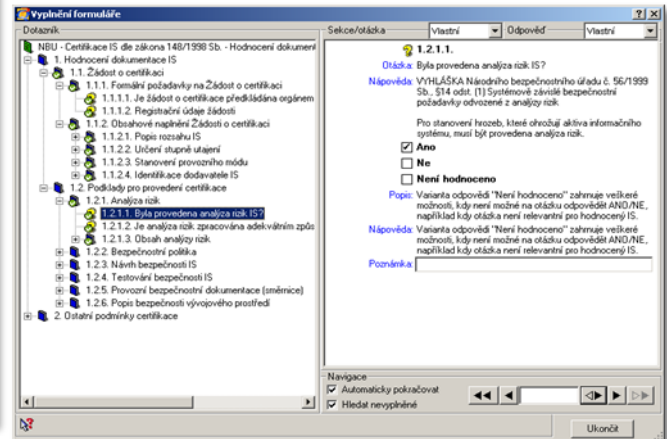
Methodology and a set of tools, **RAC Questor®**, create a sophisticated environment by satisfying the needs of an organization, which is requested to support the managing processes or a control of information about, the condition of the organization in different areas of its function.

The base of **RAC Questor®** space is an integrated space for design and filling prepared questionnaires as well as their consecutive interpretation including an execution of the expert's results and appropriate recommendations, which are created by the **professional system of questionnaires' interpretation support**.

**RAC Questor®** space is utilized as to **filling** forms of a particular questionnaire such as an **interpretation** of questionnaires. Basic structure of a questionnaire, which contains hierarchical sequenced structures of **questions, answers and evaluations**, creates thematically qualified unit (Q-Module), which is supported by other elements, for example **help, notes and navigations**.

### Main contributions

- **A preferable organization and computerization of collecting information for decision making.**
- **More effective design, distribution and collecting of requested entries by using intelligent questionnaires.**
- **More operative work with questionnaires compare to the standard paper form.**
- **Higher quality of obtained information' evaluation.**
- **Enhancement of the designed speed and evaluated statements' contained.**
- **Higher objectivity of evaluated results.**



# SOPHISTICATED ENVIRONMENT FOR SUPPORT OF MANAGING AND CONTROLLING PROCESSES

## Levels of user

### RAC Questor® Desktop

This basic one-user version is designated for work with one concrete Q-module, which determines specified scope of functionality of versions Standard and Expert attributes' combinations.

### RAC Questor® Standard

This multiuser version for one workplace allows the user to create, fill in and evaluate questionnaires' as well as creating exit reports from them. It allows importing blank and exporting filled-out forms. It contains as administration system of users, organizations and individual Q-modules.

### RAC Questor® Expert

This version enlarges Standard version mainly for the possibility to create form and message templates as well as to evaluate more filled-out forms.

### RAC Questor® Developer

This version is determinate for design and tuning individual Q-modules. It allows the users development of a comprehensive questionnaire of questions, answers and corresponding evaluation including templates, messages and supporting information used for the description as well as the help in utilization of Q-module space.

### RAC Questor® ASP

This module (Application Service Provider) is designated to create distributed space to share RAC Questor space in wide networks (Internet, Intranet) and allows assuring an effective and secure access in providing information between license holders.

## Key attributes

### Tool flexibility

Tool is available in three versions (progress, central evaluation, independent work) in dependence on needs and the purposes of its usage.

### Environment modularity

Tool environment can contain only the needed questionnaires with the possibility of its distribution and the possible collection of corresponding answers.

### Sophisticated interface

Tool contains multilingual interface, which allows a fast and easy way of reflection (tree data window) and a shifting (drag and drop) of individual parts of Q-Module.

### Expert's evaluation

Tool supports creating of corresponding evaluations, which are derivative from the answers. Individual relations can be set as for quantitative and qualitative evaluation.

### Extensive outputs

Part of the tool is extensive amount of exit reports (transparent and detailed) in different formats (Excel, Word, etc.), as for documentation of questionnaire contains as its infilling and consequential evaluation (textual and graphic).

### Integrated help

Every important element of the questionnaire (question, answer, result) can be improve during the development of the questionnaire by corresponding help, which is available in its infilling.

### Distributing protection

To export and import information between individual workplaces of an organization is used by a safe (cipher) transfer form of information fixed on the license scheme.

### Multiuser platform

The environment allows effective sharing of space between more users and organizations with, the assurance of the needed security.



Risk Analysis Consultants, s. r.o.  
Španělská 2  
120 00 Prague 2  
Czech Republic  
+420 221 628 400  
rac@rac.cz  
www.rac.cz

Risk Analysis Consultants is a Czech based professional provider of information security services and solutions. We have assisted organizations from government and commercial sectors in protecting their information since 1995. We are the only firm exclusively specialized in the information security field in the Czech market, and one of the few in Europe and as well as the world.



QR code RAC